

Stelzentrakt Goethe-Schule

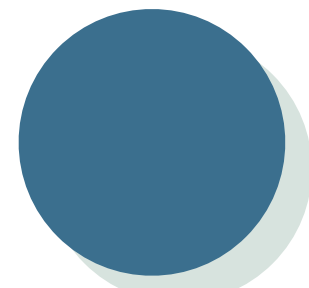


Sanierung Stelzentrakt Goethe-Schule Stand 04/23

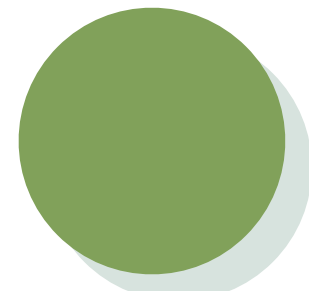




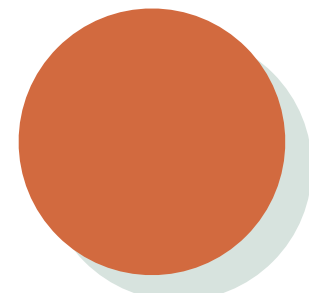
Verteilung auf den Etagen



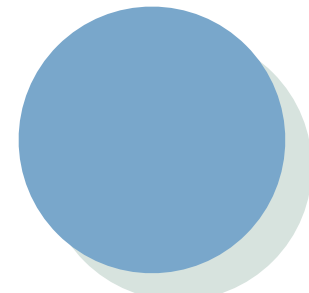
3. Obergeschoss - 8. Klasse



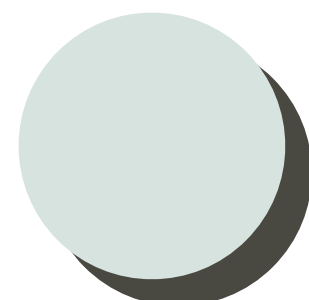
2. Obergeschoss - 7. Klasse



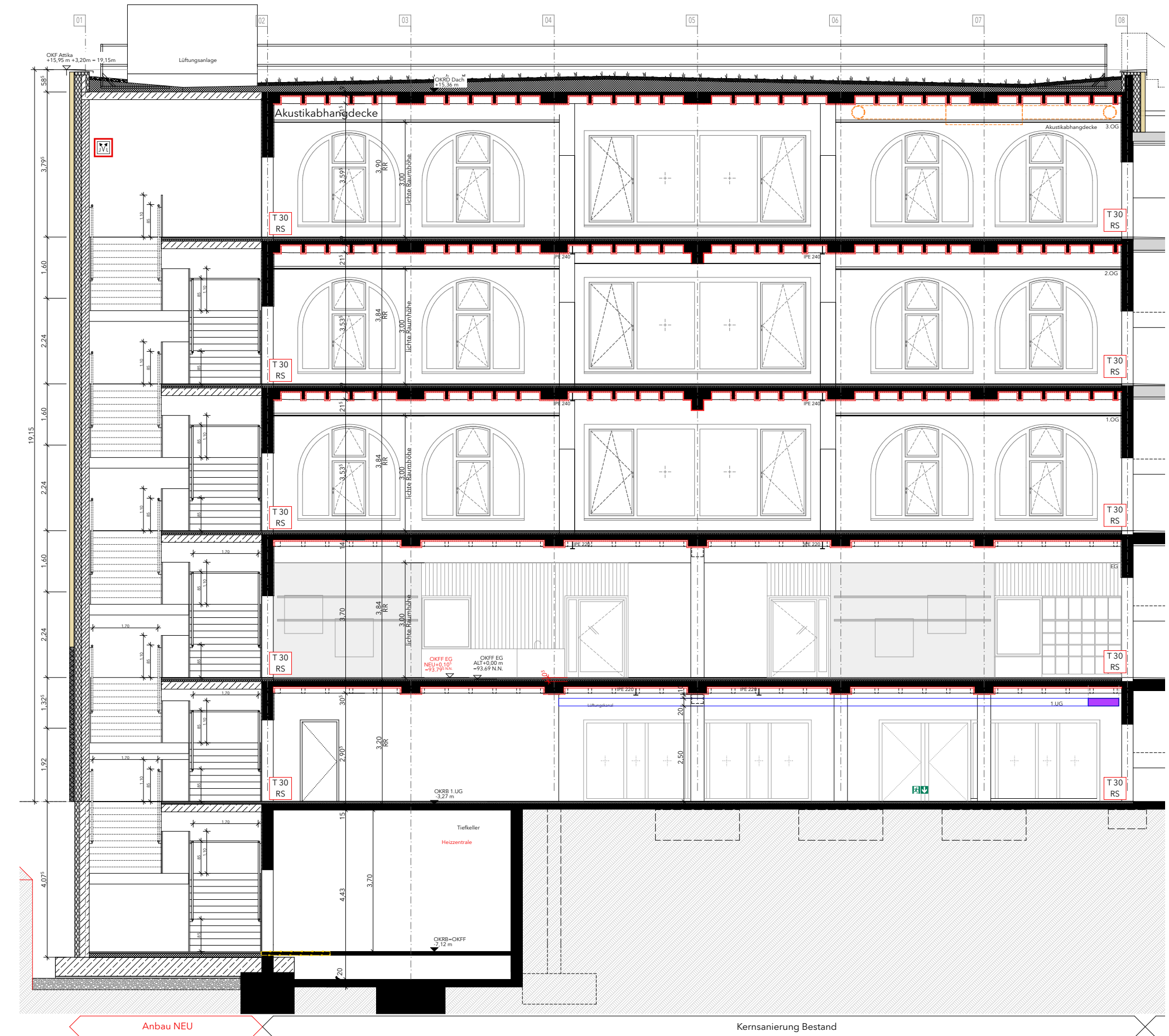
1. Obergeschoss - 6. Klasse



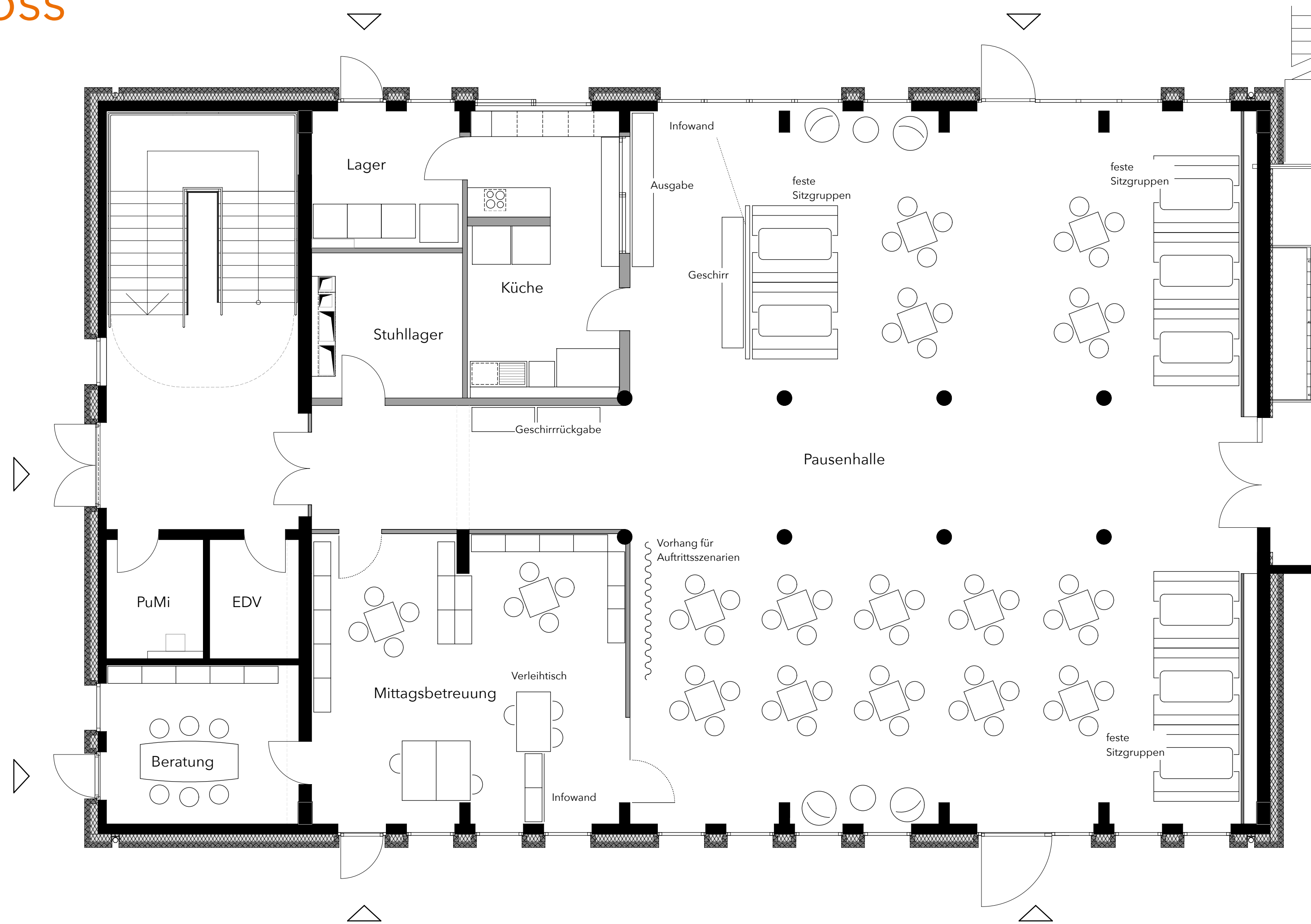
Erdgeschoss - 5. Klasse



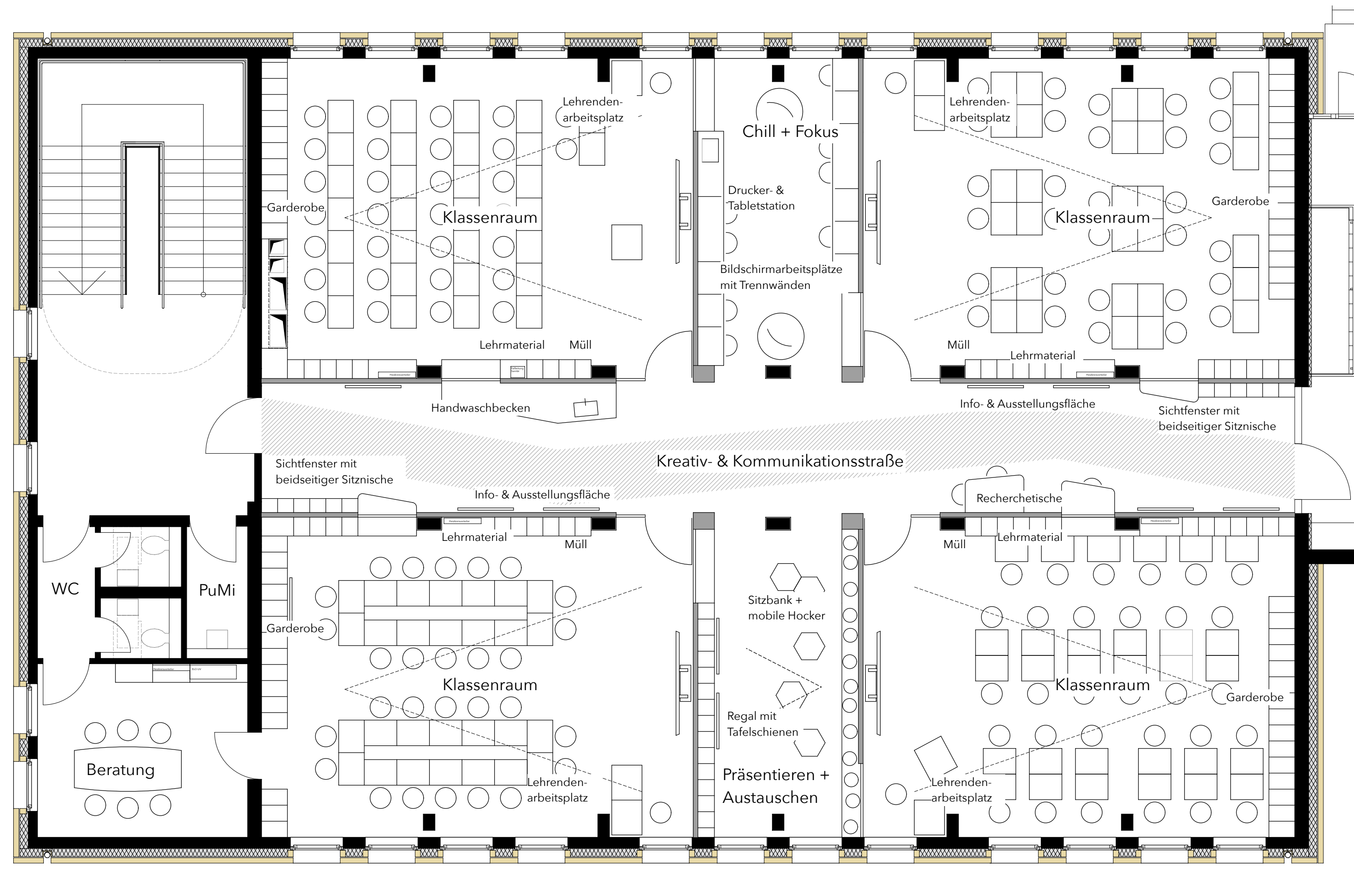
Untergeschoss / Gemeinschaftsbereiche



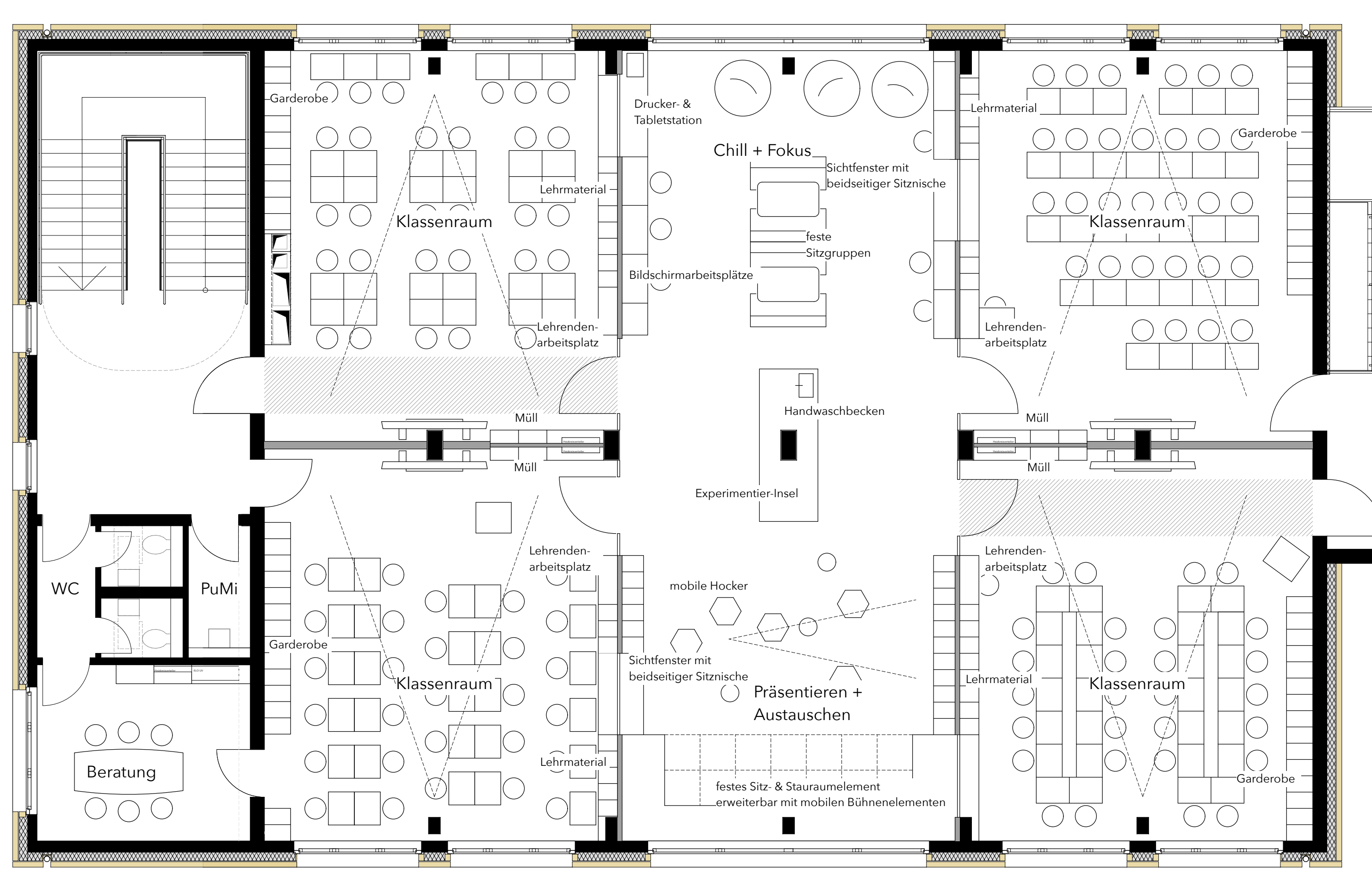
Untergeschoss



Erdgeschoss



Obergeschoss



Umgebung und Außenbezug

Fassade





büsing van wickeren Architekten
Prinz-Regent-Straße 50-60
44795 Bochum

Ansprechpartner:

Frau Sarah Hammermeister, B.Sc. Architektin AKNW
Herr Frank van Wickeren, Dipl.-Ing. Architekt AKNW